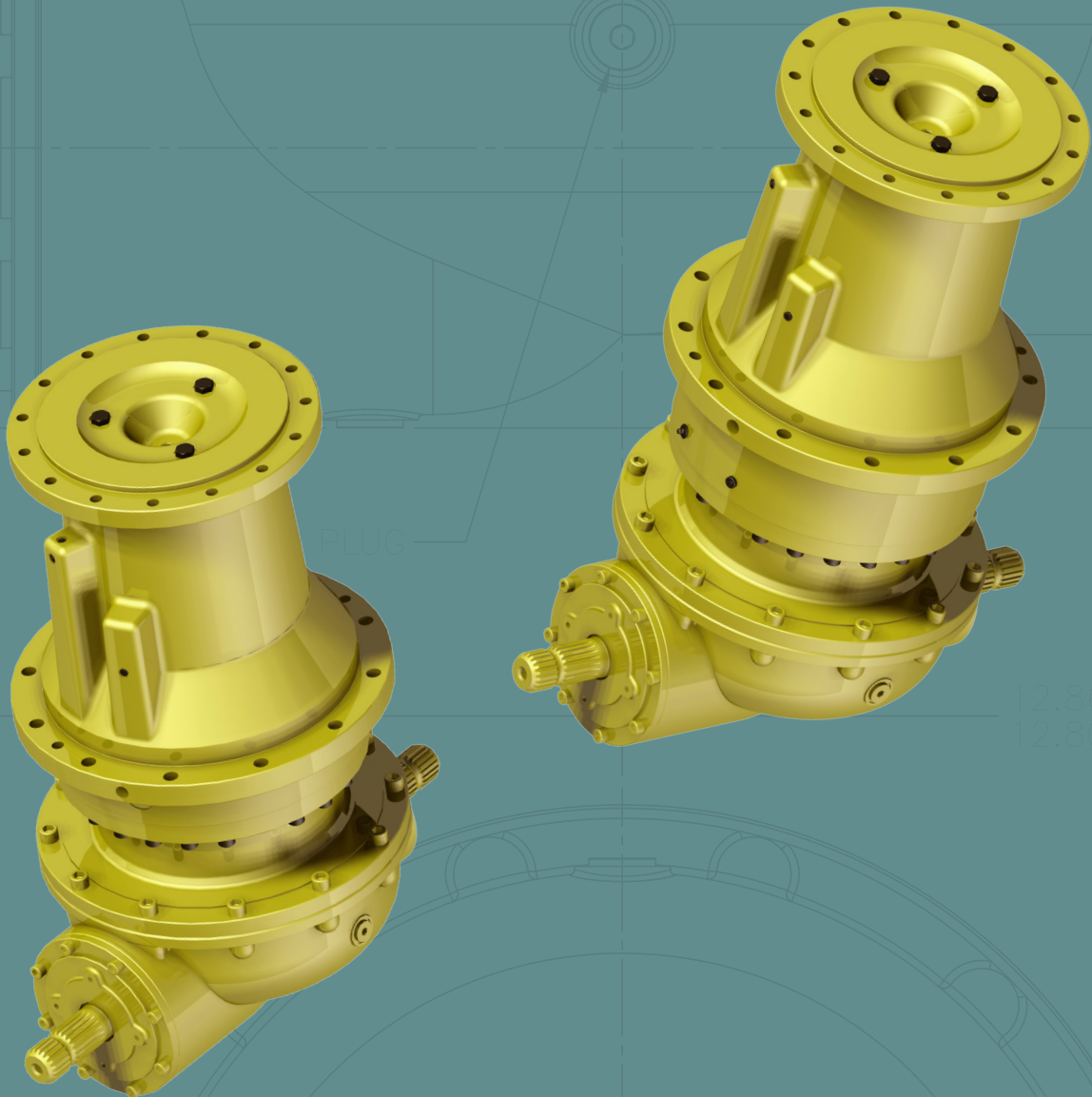


Auburn Gear
Engineered Drive Solutions



Power Wheel®
Model VM10, VM20, VM30
Vertical Feed Mixer Drives



Power Wheel® Vertical Feed Mixer Drives

Our vertical feed mixer gearboxes are designed, sourced, manufactured, and assembled in our facility in North America, allowing us to ensure the use of the highest quality components and materials while providing an industry leading lead time.

Designed to Perform

Models VM10, VM20, and VM30 utilize a ductile iron housing and planetary gearing, a one-piece alloy steel forged output drive shaft, coupled with a modular right angle gearbox. To eliminate external plumbing, a feature that is prone to leakage and damage, our housing is designed with integral oil channels. Planetary gearing provides for quiet, smooth, and efficient operation along with the ability to transfer more power in a given space.



Auburn Gear Testing

- Product validation using both in-house DVP&R and actual field acquired data
 - Critical information for customer approvals
 - Validation using high capacity on-site, in-house vertical dyne capability
- Calculated Gear Life based on duty cycle using current gearing/material options
- Physical confirmation testing using vertical dynamometer
- In-house failure analysis & material expertise



Available to the Aftermarket

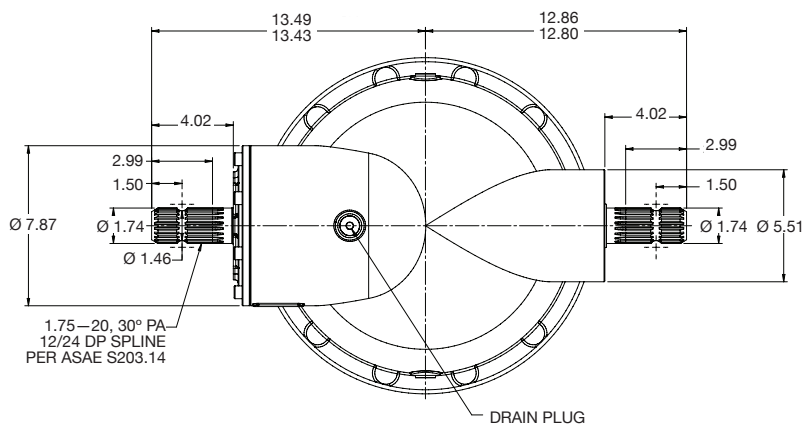
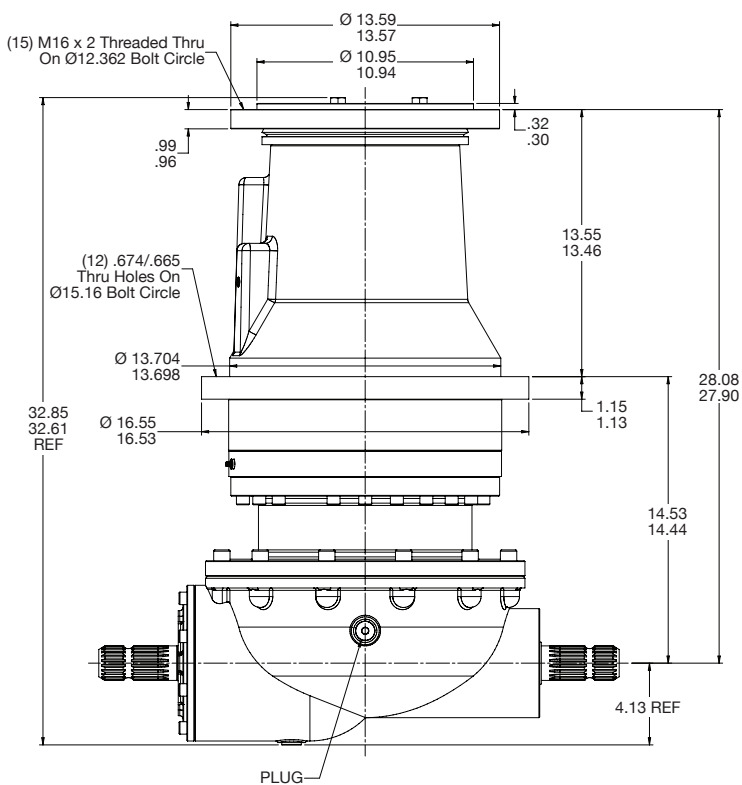
Contact Auburn Gear for more information.

Model VM30

GENERAL SPECIFICATIONS

Intermittent Torque Rating.....350,000 lb-in (40,000 Nm)
 Ratios (540 RPM Input).....13.17:1
 (1,000 RPM Input).....24.46:1

Oil Capacity
 With greased upper bearing.....725 oz. (5.75 gallons, 21.5 liters)
 With oiled upper bearing.....Contact Auburn Gear





Providing Technology, Quality, & Customer Support Around the Globe



400 E. Auburn Drive • Auburn, IN 46706 USA
260.925.3200
www.AuburnGear.com

*All specifications and data contained herein are nominal and subject to change without notice.
Specific applications should be referred to Auburn Gear for Current information.*